



CATALOGUE VOLUME 1
Cutlery

www.tomkin.com.au



www.tomkin.com.au

NEW SOUTH WALES, HEAD OFFICE AND SHOWROOM

148 McEvoy Street, Alexandria NSW 2015
Telephone: +61 2 8665 4675
Fax: +61 2 9319 2887
Email: sales@tomkin.com.au
Office Hours: Monday to Friday 9.00am - 5:00pm

QUEENSLAND RETAIL

27 Ipswich Road, Woolloongabba QLD 4102
Telephone: +61 7 3252 1277
Fax: +61 7 3854 1703
Email: sales@bensonagencyco.com.au
Office Hours: Monday to Friday 9.00am - 5.00pm
Showroom by Appointment.

SOUTH AUSTRALIA

31 Grove Avenue, Marleston SA 5033
Telephone: +61 8 8297 1122
Fax: +61 8 8297 5889
Email: info@burfittselth.com.au
Office Hours: Monday to Friday 9.00am - 5:00pm

VICTORIA

7/324 Albert Street, Brunswick VIC 3056
Telephone: +61 3 9388 9999
Fax: +61 3 9388 9988
Email: tomkinsales@glasswareandchina.com.au
Office Hours: Monday to Friday 9.00am - 4.30pm

QUEENSLAND COMMERCIAL

14 Gibbon St, Woolloongabba, 4102
Telephone: +61 7 3391 0424
Fax: +61 7 3391 0402
Email: qldsales@tomkin.com.au
Office Hours: Monday to Friday 9:00am - 5:00pm
Showroom by Appointment.

WESTERN AUSTRALIA

Unit 3 / 30 Gympie Way, Willetton WA 6155
Telephone: +61 8 9259 1516
Fax: +61 8 6210 1391
Email: jason@rswa.com.au
Office Hours: Monday to Friday 9.00am - 5:00pm

Follow us on:



Facebook & Instagram

CUTLERY
COLLECTION 2016



STUDIO**WILLIAM**®



CONTENTS

Welcome 4

Caring For Your Cutlery 6

tk|tablekraft™

Soho 7

Aero Dawn 9

Opera 11

Aswan 13

Alexis 15

Amalfi 17

Sienna 19

Cairo Satin 21

Oxford 23

Bogart 25

Eifel 27

Florence 29

Elite 31

Gable 33

Casino 35

Strand 37

Monaco 39

Elegance 41

Milano 43

Harley 45

Monte 47

Mirabelle 48

Panama 49

Princess 51

York 53

Luxor 55

Sorrento 57

Melrose 59

Atlantis 61

Austwind 63

Aristocrat 65

Impulse 66

Alaska Mirror 67

Alaska Satin 67

Steak Knives 68

tablekraft Boxed Sets 69

STUDIOWILLIAM®

Mulberry 73

Mulberry - Mirror Finish 74

Kumquat 75

Baobab 76

Bodhi 79

Karri 81

Olive 83

Redwood 85

Mulberry Tasting Spoons 87

Studio William Gift Sets 88

Cutlery Making Process 89




DESIGNED LOCALLY, FAMOUS GLOBALLY


As one of Australia's most established brands and a hospitality market leader, tablekraft™ presents a calibre of cutlery synonymous with over 30 years of experience. Showcasing a selection of modern, classic, casual and elegant designs tablekraft offers a range of cutlery that is timeless, iconic and innovative.

Offering consistency and a long product life-cycle, tablekraft is also committed to introducing new styles and designs perfectly suited to the latest trends in food and dining presentation.

Available as open stock patterns and gift sets, tablekraft offers the market over 50 different styles.

Manufactured from the highest quality 18/10 Stainless Steel*, each piece of tablekraft cutlery has been designed in Australia specifically for the Australian market. Committed to maintaining its reputation for high quality and reliability, tablekraft products are beautifully crafted and perfected for their purpose.

tablekraft is highly acclaimed and acknowledged as an industry innovator so **beware of tablekraft imitations**. To ensure quality and avoid disappointment always search for the  stamped on the back of all tablekraft cutlery pieces.

 is the hallmark of tablekraft. It represents value, quality, consistency and design excellence.

* all tablekraft products are 18/10 Stainless Steel unless otherwise stated.





A tablekraft™ guide to keeping your cutlery looking its best.

Stainless Steel

Stainless steel is one of the most durable metals available with its exceptional ability to resist stains, rust and corrosion.

Contrary to popular belief, stainless steel is neither stain nor rust proof and even the finest alloy will suffer if not cared for. So please consider the following to keep your cutlery looking its best for years to come.

Prolonged exposure to foods that contain Chloride such as; mustard, table salt, eggs and jam can stain if not rinsed off immediately. Some of the minerals and salts in tap water can cause pitting and staining.

Washing

Wash in hot water and a good quality detergent. Rinse in water of at least 80°C. If using a dishwasher, remove the basket shortly after the drying cycle and allow cutlery to air dry. Cutlery should not be left undried and in a damp place overnight. Cutlery must be completely dry before stored. Stainless Steel must be kept separate from Aluminium or Silver-plated items to avoid pitting.

Special Cleaning of stains

Use a mild abrasive or metal polish to remove discolourations and revive the finish of your cutlery. Water stains can be removed by rubbing either alcohol or salad oil into the pieces. To keep the shine on your cutlery use a sponge with white vinegar.

Handling

Perforated flatwear cylinders are recommended to avoid excess handling.





GOLD



SOHO GOLD

Item ID	Type	L
13252	Dessert fork	185
13253	Dessert spoon	183
13254	Soup spoon	176
13255	Teaspoon	140
13260	Table fork	205
13271	Dessert knife	215
13272	Table knife	350

SOHO GOLD SETS

Item ID	Type	Place Setting
13000-16	16 Piece set	4
13000-24	24 Piece set	6
13000-56	56 Piece set	8

Sold by the dozen

INK



SOHO INK

Item ID	Type	L
13052	Dessert fork	185
13053	Dessert spoon	183
13054	Soup spoon	176
13055	Teaspoon	140
13060	Table fork	205
13071	Dessert knife	215
13072	Table knife	350

SOHO INK SETS

Item ID	Type	Place Setting
13000-16	16 Piece set	4
13000-24	24 Piece set	6
13000-56	56 Piece set	8

Sold by the dozen

ROSE



SOHO ROSE

Item ID	Type	L
13152	Dessert fork	185
13153	Dessert spoon	183
13154	Soup spoon	176
13155	Teaspoon	140
13160	Table fork	205
13171	Dessert knife	215
13172	Table knife	350

SOHO ROSE SETS

Item ID	Type	Place Setting
13100-16	16 Piece set	4
13100-24	24 Piece set	6
13100-56	56 Piece set	8

Sold by the dozen

MATT



SOHO MATT

Item ID	Type	L
13352	Dessert fork	185
13353	Dessert spoon	183
13354	Soup spoon	176
13355	Teaspoon	140
13360	Table fork	205
13371	Dessert knife	215
13372	Table knife	350

SOHO MATT SETS

Item ID	Type	Place Setting
13300-16	16 Piece set	4
13300-24	24 Piece set	6
13300-56	56 Piece set	8

Sold by the dozen



AERO DAWN

18/10 STAINLESS STEEL

tk | tablekraft

Highly polished cutlery, with long sleek lines and elegant curves.
Well balanced composition that is light in the hand.





Dessert fork
12652
180mm



Table fork
12660
200mm



Dessert knife
12671
209mm



Table knife
12672
232mm



Dessert spoon
12653
180mm



Soup spoon
12654
175mm



Teaspoon
12655
135mm



Coffee spoon
12651
105mm



Cake fork
12658
135mm



Table spoon
12659
200mm



Soda spoon
12661
176mm



Butter knife
12670
193mm



Steak knife
12673
235mm

h/h = hollow handle st = standing knife



OPERA

18/10 STAINLESS STEEL

tk | tablekraft

A modern avocation of an Edwardian pattern. Dispensing with frippery, the highly mirror polished 18/10 implements allow one to appreciate the music of food.





18/10 STAINLESS STEEL



Dessert fork
12952
183mm



Table fork
12960
204mm



Dessert knife
12971
205mm



Table knife
12972
228mm



Dessert spoon
12953
184mm



Soup spoon
12954
180mm



Tea spoon
12955
136mm



Coffee spoon
12951
105mm



Cake fork
12958
135mm



Table spoon
12959
205mm



Soda spoon
12961
177mm



Butter knife
12970
185mm



Steak knife
12973
228mm

h/h = hollow handle st = standing knife



ASWAN

18/10 STAINLESS STEEL

tk | tablekraft

Unique in design, Aswan is a true statement piece. Distinguishable by its striped oxidised handles and smooth satin finished heads, Aswan offers a modern take on an antique emporium design. This range is anything but conventional.





18/10 STAINLESS STEEL



Dessert fork
16552
187mm



Table fork
16560
207mm



Table knife
16572
228mm



Dessert knife
16571
210mm



Table spoon
16559
190mm



Soup spoon
16554
181mm



Dessert spoon
16553
189mm



Tea spoon
16555
138mm



Coffee spoon
16551
120mm



Soda spoon
16561
186mm



Fish fork
16568
189mm



Fish knife
16569
197mm



Butter knife
16570
176mm

h/h = hollow handle st = standing knife



ALEXIS

18/10 STAINLESS STEEL

tk | tablekraft

The flat, broad handle of Alexis delivers a minimalist approach to the dining experience. Influenced by Scandinavian design, the square base, satin finish and tapered lines of the handle are strong yet sleek. The mirrored head adds a modern touch to these durable utensils.





18/10 STAINLESS STEEL



Dessert fork
16052
184mm



Table fork
16060
200mm



Table knife
16072
235mm



Dessert knife
16071
211mm



Soup spoon
16054
177mm



Dessert spoon
16053
185mm



Tea spoon
16055
137mm



Oyster fork
16062
131mm



Cake fork
16058
147mm



Soda spoon
16061
185mm



AMALFI

18/10 STAINLESS STEEL

tk | tablekraft

Inspired by the beauty of its namesake, Amalfi is through its simplicity, curvaceous and pleasing to the eye. Its clean lines and all mirror finish create a charming combination.





18/10 STAINLESS STEEL



Dessert fork
18152
190mm



Table fork
18160
205mm



Table knife
18172
233mm



Dessert knife
18171
204mm



Soup spoon
18154
183mm



Dessert spoon
18153
190mm



Tea spoon
18155
134mm



Coffee spoon
18151
120mm



Soda spoon
18161
185mm



Table spoon
18159
203mm



Oyster fork
18162
130mm



Cake fork
18158
140mm



Buffet fork
18167
180mm



Steak knife
18173
235mm



Cheese knife
18175
200mm



Butter knife
18170
175mm



Salad fork
18143
240mm



Salad spoon
18144
245mm



Serving spoon
18179
265mm



Cake server
18174
290mm

h/h = hollow handle st = standing knife



SIENNA

18/10 STAINLESS STEEL

tk | tablekraft

Impeccably weighted and contoured, Sienna feels as if it moulds to the shape of the hand. The partial satin finish and beveled handle represents its advanced design and the thickness and curve of the knife signifies recent trends.





18/10 STAINLESS STEEL



Dessert fork
16252
186mm



Table fork
16260
206mm



Table knife
16272
242mm



Dessert knife
16271
218mm



Soup spoon
16254
178mm



Dessert spoon
16253
186mm



Tea spoon
16255
138mm



Coffee spoon
16251
120mm



Oyster fork
16262
133mm



Soda spoon
16261
186mm



Rice spoon
16248
256mm

h/h = hollow handle st = standing knife



CAIRO SATIN

18/10 STAINLESS STEEL

Like it's sister, Cairo Mirror, Cairo Satin is a simple streamline design that blends functionality with tradition, and will compliment any table setting.



Dessert fork
15752
183mm



Table fork
15760
197mm



Table knife
15772
225mm



Dessert knife
15771
205mm



Soup spoon 15754
177mm



Dessert spoon
15753
183mm



Tea spoon
15755
142mm



18/10 STAINLESS STEEL

Cairo mirror is a sophisticated pattern that will bring elegance to the table. Both Cairo mirror and Cairo satin feature the highest quality 18/10 stainless steel.



Dessert fork
15652
183mm



Table fork
15660
197mm



Table knife
15672
225mm



Dessert knife
15671
205mm



Soup spoon
15654
177mm



Dessert spoon
15653
183mm



Tea spoon
15655
142mm

h/h = hollow handle st = standing knife



OXFORD

18/10 STAINLESS STEEL

tk | tablekraft

Oxford is a timeless range that would impress on any occasion. Its bold reeding, hollow handle knife, long fork tines, and deep bowls are symbols of the high regard in which this all mirror finished pattern is held. A classic French design, Oxford emulates refined grace.





18/10 STAINLESS STEEL



Dessert fork
18752
188mm



Table fork
18760
210mm



Table knife
18772
245mm



Dessert knife
18771
213mm



Soup spoon
18754
175mm



Dessert spoon
18753
185mm



Tea spoon
18755
135mm



Coffee spoon
18751
108mm



Cake fork
18758
140mm



Oyster fork
18762
130mm



Soda spoon
18761
180mm

h/h = hollow handle st = standing knife



BOGART

18/10 STAINLESS STEEL

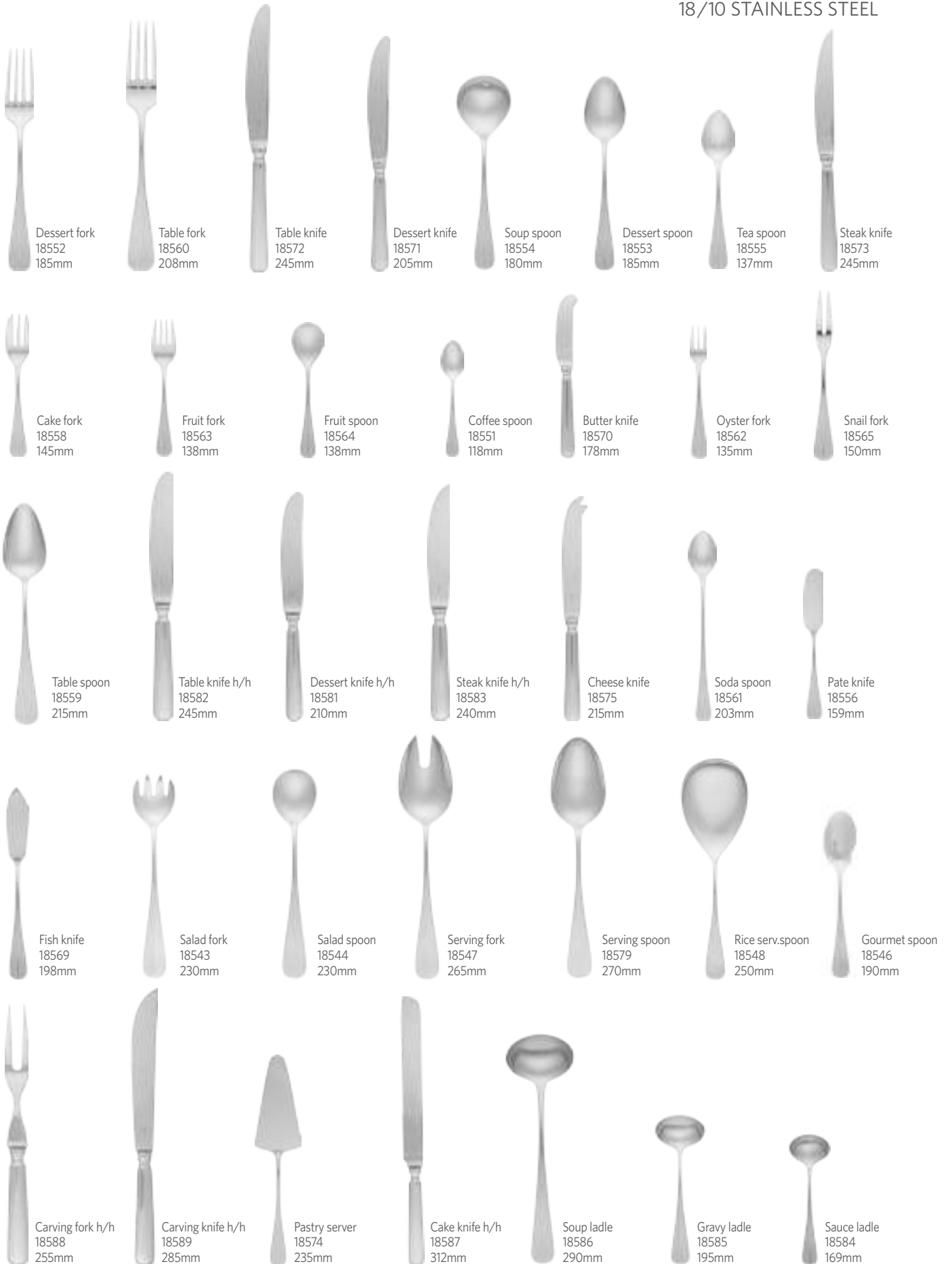
tk | tablekraft

Equally at home in any environment Bogart is classically elegant. Symmetrically contoured, Bogart's all mirror polish, hollow handle knife, long fork tines, and deep bowls represent the epitome of design. A conventional style with over 300 years of history, Bogart offers a comprehensive range.





18/10 STAINLESS STEEL



h/h = hollow handle st = standing knife



EIFEL

18/10 STAINLESS STEEL

tk | tablekraft

The geometric design of Eiffel delivers an Art Deco feel to the modern table. A range inspired by French monuments and structures, the elegant lines and long fork tines gives this all mirror finished pattern a feel of old world charisma.





18/10 STAINLESS STEEL



Dessert fork
19152
187mm



Table fork
19160
205mm



Table knife
19172
234mm



Dessert knife
19171
208mm



Soup spoon
19154
178mm



Dessert spoon
19153
180mm



Tea spoon
19155
137mm



Coffee spoon
19151
113mm



Butter knife
19170
170mm



Fish fork
19168
180mm



Fish knife
19169
197mm



Table knife h/h
19182
240mm



Table spoon
19159
205mm



Salad fork
19143
235mm



Salad spoon
19144
235mm



Pastry server
19174

h/h = hollow handle st = standing knife



FLORENCE

18/10 STAINLESS STEEL

tk | tablekraft

Influenced by the beauty in simplicity, Florence delivers gentle curves and sweeping contours in an all mirror finish. A choice of monobloc or hollow handle knife, Florence's elongated design is timeless and elegant in its modesty.





18/10 STAINLESS STEEL



Dessert fork
12252
180mm



Table fork
12260
205mm



Soup spoon
12254
170mm



Dessert spoon
12253
177mm



Tea spoon
12255
135mm



Oyster fork
12262
135mm



Cake fork
12258
145mm



Fruit fork
12263
138mm



Fruit spoon
12264
135mm



Coffee spoon
12251
120mm



Soda spoon
12261
197mm



Table spoon
12259
207mm



Butter knife 12270
185mm



Table knife
12272
240mm



Dessert knife
12271
210mm



Table knife standing
12292
235mm



Dessert knife standing
12291
215mm



Steak knife
12273
228mm



Cheese knife
12275
220mm

h/h = hollow handle st = standing knife



ELITE

18/10 STAINLESS STEEL

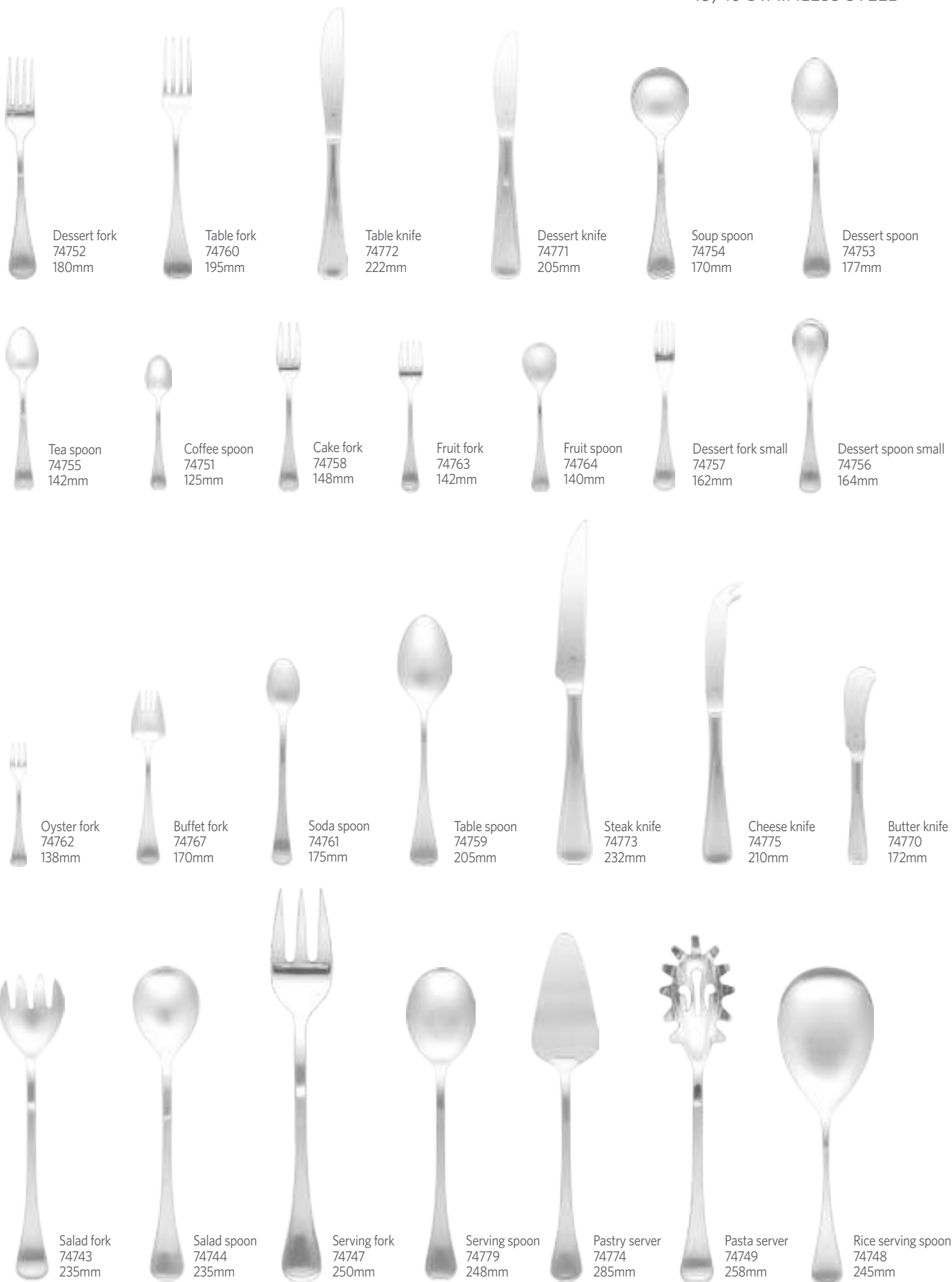
tk | tablekraft

Sophistication is the essence of this all time favourite. Elite's gradual transition from mirror head to satin finished monobloc handle is complimented by its hourglass curve and rounded base. Elite's extensive range is comfortable in any table setting.





18/10 STAINLESS STEEL



h/h = hollow handle st = standing knife



GABLE

18/10 STAINLESS STEEL

tk | tablekraft

Gable is the accomplished blend of English integrity and quality. Noted for its hollow handle knife, deep bowls and extensive offering, Gable with its all mirror finish and teardrop-shaped handles are a true reflection of good taste.





18/10 STAINLESS STEEL



Dessert fork
18852
180mm



Table fork
18860
205mm



Table knife
18872
245mm



Dessert knife
18871
210mm



Soup spoon
18854
168mm



Dessert spoon
18853
180mm



Tea spoon
18855
135mm



Oyster fork
18862
130mm



Cake fork
18858
145mm



Fruit fork
18863
138mm



Fruit spoon
18864
138mm



Coffee spoon
18851
118mm



Soda spoon
18861
185mm



Table knife h/h
18882
245mm



Cheese knife
18875
220mm



Butter knife h/h
18880
195mm



Butter knife
18870
190mm



Sauce ladle
18884
165mm



Salad fork
18843
230mm



Salad spoon
18844
230mm



Serving fork
18847
265mm



Serving spoon
18879
265mm



Cake server
18874
280mm



Gravy ladle
18885
180mm

h/h = hollow handle st = standing knife



CASINO

18/10 STAINLESS STEEL

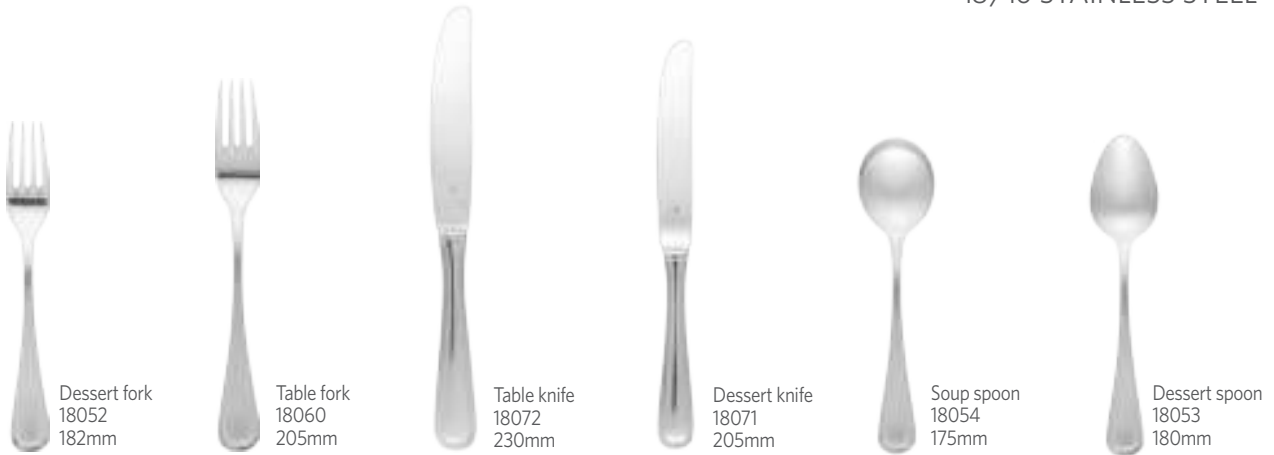
tk | tablekraft

Casino is a blend of tradition and formality, defined by the intricate reeding in its handle, all mirror finish, deep bowls and hollow handle knife, Casino offers a level of prestige to the table setting.





18/10 STAINLESS STEEL



Dessert fork
18052
182mm

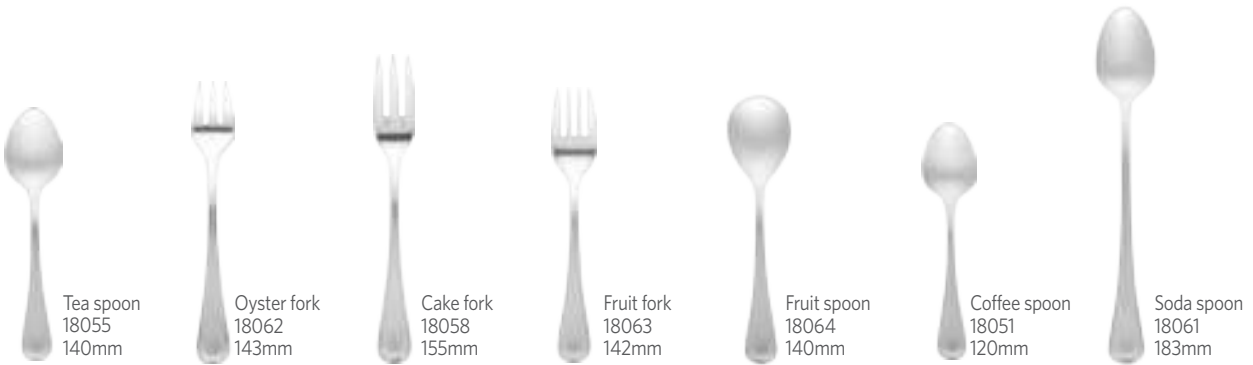
Table fork
18060
205mm

Table knife
18072
230mm

Dessert knife
18071
205mm

Soup spoon
18054
175mm

Dessert spoon
18053
180mm



Tea spoon
18055
140mm

Oyster fork
18062
143mm

Cake fork
18058
155mm

Fruit fork
18063
142mm

Fruit spoon
18064
140mm

Coffee spoon
18051
120mm

Soda spoon
18061
183mm



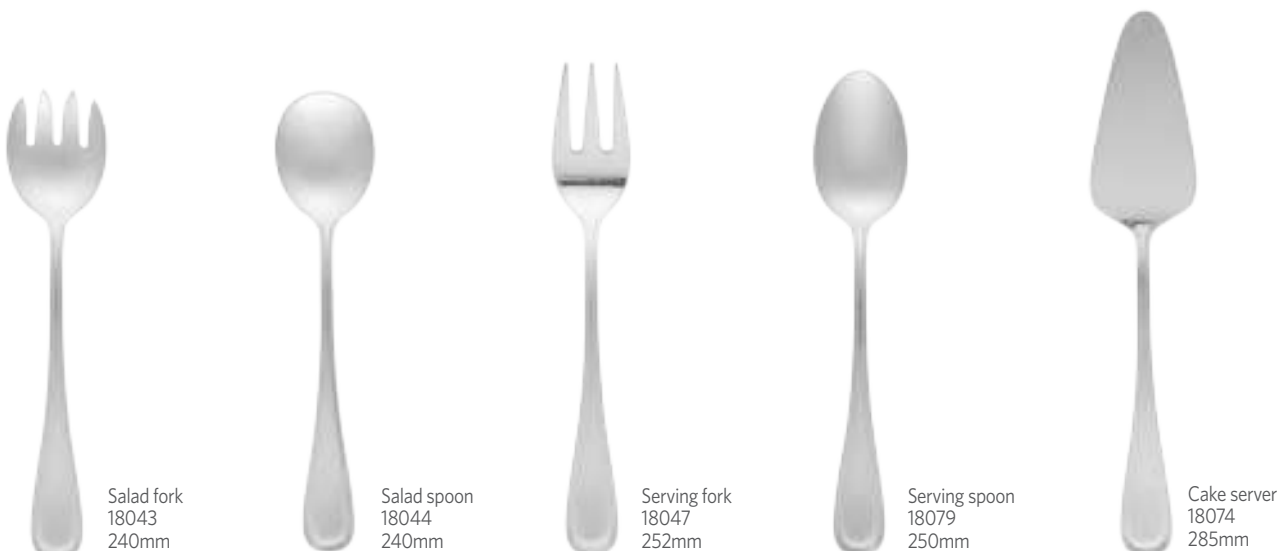
Dessert knife h/h
18081
205mm

Steak knife
18073
236mm

Cheese knife
18075
195mm

Butter knife h/h
18080
170mm

Butter knife
18070
170mm



Salad fork
18043
240mm

Salad spoon
18044
240mm

Serving fork
18047
252mm

Serving spoon
18079
250mm

Cake server
18074
285mm

h/h = hollow handle st = standing knife



STRAND

18/10 STAINLESS STEEL

tk | tablekraft

Strands seamless transition from satin to mirror finish offers a very clean and practical style. Combining chic design elements such as a curved neck, a step in the angled base and deep bowls, Strand delivers a smart and esteemed look complimentary to any table setting.





18/10 STAINLESS STEEL



Dessert fork
77752
180mm



Table fork
77760
204mm



Table knife
77772
235mm



Dessert knife
77771
210mm



Soup spoon
77754
174mm



Dessert spoon
77753
179mm



Tea spoon
77755
137mm



Coffee spoon
77751
110mm



Soda spoon
77761
188mm



Oyster fork
77762
130mm



Cake fork
77758
147mm



Salad fork
77743
219mm



Salad spoon
77744
223mm



Rice server
77748
247mm

h/h = hollow handle st = standing knife



MONACO

18/10 STAINLESS STEEL

tk | tablekraft

Monaco is a bold design full of surprises. The geometric lines of its beveled handle and square step in the neck are reminiscent of an Art Deco style. Monaco's high mirror finish is silky to the touch delivering a wonderfully crafted design.





18/10 STAINLESS STEEL



Dessert fork
18252
178mm



Table fork
18260
205mm



Table knife
18272
240mm



Dessert knife
18271
210mm



Soup spoon
18254
172mm



Dessert spoon
18253
178mm



Tea spoon
18255
138mm





ELEGANCE

18/10 STAINLESS STEEL

tk | tablekraft

With a design dating back to the early 1800's, Elegance is aptly named. Recognised for its ornate fiddle shape and thread in the handle, Elegance's all mirror finish and hollow handle knife make a grand statement.





18/10 STAINLESS STEEL



Dessert fork
18952
175mm



Table fork
18960
195mm



Dessert knife
18971
215mm



Table knife
18972
240mm



Soup spoon
18954
165mm



Dessert spoon
18953
178mm



Tea spoon
18955
140mm



Coffee spoon
18951
120mm



Soda spoon
18961
189mm



Steak knife
18973
233mm



Butter knife
18970
185mm



Serving fork
18947
260mm



Serving spoon
18979
265mm



Carving fork h/h
18988
255mm



Carving knife h/h
18989
285mm

h/h = hollow handle st = standing knife



MILANO

18/10 STAINLESS STEEL

tk | tablekraft

Milano is at the forefront of modern style. Clean and soft to the touch its all mirror finish, elongated design and smooth seamless lines show signs of innovation. Subtly finished, Milano compliments the dining experience.





18/10 STAINLESS STEEL



Dessert fork
12052
185mm



Table fork
12060
198mm



Table knife
12072
203mm



Dessert knife
12071
205mm



Soup spoon
12054
178mm



Dessert spoon
12053
183mm



Tea spoon
12055
140mm



Oyster fork
12062
130mm



Fruit fork
12063
145mm



Fruit spoon
12064
140mm



Coffee spoon
12051
115mm



Table spoon
12059
188mm



Steak fork
12050
200mm



Steak knife
12073
217mm



Butter knife
12070
180mm



Fish fork
12068
195mm



Fish knife
12069
225mm



Salad fork
12043
235mm



Salad spoon
12044
235mm



Serving spoon
12079
235mm



HARLEY

18/10 STAINLESS STEEL

tk | tablekraft

Harley boasts a modern take on an Art Deco design. Its all mirror finish accentuates its geometric cut and thread in the handle, whilst its traditional features, such as its hollow handle knife, long fork tines, and deep bowls earns Harley a distinctive formal image.





18/10 STAINLESS STEEL



Dessert fork
18452
178mm



Table fork
18460
195mm



Table knife
18472
230mm



Dessert knife
18471
218mm



Soup spoon
18454
170mm



Dessert spoon
18453
178mm



Tea spoon
18455
140mm



Oyster fork
18462
133mm



Table spoon
18459
195mm



Soda spoon
18461



MONTE

18/10 STAINLESS STEEL

tk | tablekraft

Monte's elaborate features decorate this graceful design. It's all mirror finish and subtle reeding are complimented by a flower motif at the end of the handle. Visually pleasing, this scallop shape provides a heritage feel to the table.



Dessert fork
17752
185mm



Table fork
17760
203mm



Table knife
17772
220mm



Dessert knife
17771
205mm



Soup spoon
17754
178mm



Tea spoon
17755
135mm



Dessert spoon
17753
185mm



Mirabelle is a simple modern style. Its all mirror finish, hollow handle knife, and subtle threading delivers an understated elegant design. Mirabelle's simplicity allows it to compliment any table setting.



h/h = hollow handle st = standing knife





A basic bold contemporary design, Panama looks and feels fresh. Its distinctive characteristics contrast each other with its short fork tines and elongated spoon bowls. Combined with a partial satin finish, Panama is aesthetically unique.



Dessert fork
71752
180mm



Table fork
71760
190mm



Table knife
71772
220mm



Dessert knife
71771
205mm



Soup spoon
71754
180mm



Dessert spoon
71753
190mm



Tea spoon
71755
143mm

h/h = hollow handle st = standing knife



PRINCESS

18/10 STAINLESS STEEL

tk | tablekraft

Princess's feminine form is both attractive and eye-catching. Its all mirror finish and basic approach to design makes this classic style acceptable in any environment. The slim curves of Princess are both elegant and traditional.





18/10 STAINLESS STEEL



Dessert fork
01252
188mm



Table fork
01260
198mm



Table knife
01272
215mm



Dessert knife
01271
205mm



Soup spoon
01254
182mm



Dessert spoon
01253
186mm



Tea spoon
01255
135mm



Coffee spoon
01251
120mm



Soda spoon
01261
190mm



Table spoon
01259
200mm



Cake fork
01258
143mm



Oyster fork
01262
133mm



Fruit fork
01263
137mm



Fruit spoon
01264
137mm



Salad fork
01243
230mm



Salad spoon
01244
230mm



Serving fork
01247
235mm



Serving spoon
01279
225mm

h/h = hollow handle st = standing knife



YORK

18/10 STAINLESS STEEL

tk | tablekraft

York is a natural, simple and familiar style. A timeless design, its all mirror finish combined with its basic form and a purity of line delivers an elegant conventional style that can compliment a broad array of table settings.





18/10 STAINLESS STEEL



Dessert fork
17852
188mm



Table fork
17860
198mm



Table knife
17872
215mm



Dessert knife
17871
203mm



Soup spoon
17854
180mm



Dessert spoon
17853
183mm



Table spoon
17859
195mm



Tea spoon
17855
140mm



Coffee spoon
17851
110mm



Fruit spoon
17864
145mm



Steak knife
17873
220mm



Buffet fork
17867
175mm



Cake fork
17858
148mm



Fruit fork
17863
150mm



Soda spoon
17861
200mm

h/h = hollow handle st = standing knife



LUXOR

18/10 STAINLESS STEEL

tk | tablekraft

Luxor is a simple streamline design that blends functionality with tradition. Its all mirror finish and basic modern approach to design makes Luxor a refined companion where sophistication is not essential.





18/10 STAINLESS STEEL



Dessert fork
17652
183mm



Table fork
17660
197mm



Table knife
17672
225mm



Dessert knife
17671
205mm



Soup spoon
17654
177mm



Dessert spoon
17653
183mm



Table spoon
17659
193mm



Tea spoon
17655
142mm



Coffee spoon
17651
133mm



Soda spoon
17661
193mm



Fruit spoon
17664
143mm



Oyster fork
17662
138mm



Cake fork
17658
148mm



Fruit fork
17663
143mm



Pate knife
17656
175mm



Cheese knife
17675
195mm



Steak knife
17673
238mm



Salad fork
17643
230mm



Salad spoon
17644
230mm



Serving fork
17647
235mm



Serving spoon
17679
228mm



Pastry server
17674
280mm

h/h = hollow handle st = standing knife



SORRENTO

18/10 STAINLESS STEEL

tk | tablekraft

Sorrento's design delivers a rustic feel to the table. Its angular structure, all mirror finish and fine rope beading around the handles edge make Sorrento a familiar concept enhanced by a touch of flair.





18/10 STAINLESS STEEL



Dessert fork
01852
185mm



Table fork
01860
196mm



Table knife
01872
220mm



Dessert knife
01871
210mm



Soup spoon
01854
178mm



Dessert spoon
01853
183mm



Tea spoon
01855
133mm



Coffee spoon
01851
113mm



Soda spoon
01861
175mm



Fruit spoon
01864
136mm



Fruit fork
01863
138mm



Cake fork
01858
143mm



Oyster fork
01862
130mm



Serving spoon
01879
215mm

h/h = hollow handle st = standing knife



MELROSE

18/10 STAINLESS STEEL

tk | tablekraft

Melrose's subtle style elements make it appropriate for everyday functionality. This lightweight design carries an all mirror finish and simple reeding on the handles edge delivering an elegant entry-level design.





Dessert fork
17352
185mm



Table fork
17360
200mm



Table knife
17372
225mm



Dessert knife
17371
210mm



Soup spoon
17354
177mm



Dessert spoon
17353
180mm



Tea spoon
17355
140mm



Table spoon
17359
200mm



Cake fork
17358
140mm



Fruit fork
17363
138mm



Oyster fork
17362
135mm



Soda spoon
17361
195mm



Fruit spoon
17364
140mm



Coffee spoon
17351
120mm



ATLANTIS

18/10 STAINLESS STEEL

tk | tablekraft

If a sensible choice is required, then Atlantis meets this description. Its slim, lightweight design combined with a pleasant partial satin finish creates a style that fulfills the role of everyday-use environments.





Dessert fork
01152
180mm



Table fork
01160
195mm



Table knife
01172
217mm



Dessert knife
01171
205mm



Soup spoon
01154
175mm



Dessert spoon
01153
178mm



Tea spoon
01155
135mm



Table spoon
01159
197mm



Soda spoon
01161
187mm



Oyster fork
01162
132mm



Cake fork
01158
145mm



Fruit fork
01163
137mm



Fruit spoon
01164
137mm



Coffee spoon
01151
120mm



AUSTWIND

18/10 STAINLESS STEEL

tk | tablekraft

Austwind's utilitarian design and automated tumble finish makes it functional rather than attractive. Light, durable and with the ability to stack well. Austwind is best suited in high-usage environments.





Dessert fork
01052
187mm



Table fork
01060
197mm



Table knife
01072
213mm



Dessert knife
01071
208mm



Soup spoon
01054
175mm



Dessert spoon
01053
180mm



Tea spoon
01055
138mm



Table spoon
01059
192mm



Oyster fork
01062
135mm



Cake fork
01058
146mm



Soda spoon
01061
187mm



Coffee spoon
01051
112mm



ARISTOCRAT

18/10 STAINLESS STEEL

Inspired by nobility, Aristocrat's elaborate design creates a statement at the table. The ornate symmetrical threading on the handle and all mirror finish are reminiscent of English tradition. Aristocrat creates a feeling of heritage and old world charm.



Dessert fork
01552
178mm



Table fork
01560
192mm



Table knife
01572
220mm



Dessert knife
01571
202mm



Soup spoon
01554
178mm



Dessert spoon
01553
178mm



Tea spoon
01555
136mm



Cake fork
01558
146mm



Soda spoon
01561
173mm



Impulse offers comprehensive assortment of buffet serving pieces. Noted for its high arched handles and silky mirror finish, Impulse is beautifully crafted. In-line with current food trends such as amuse bouche, tasting and degustation menus the mirror or satin canapé spoons are a chic accessory for any culinary experience.



Serving fork
20030
260mm



Serving spoon
20031
255mm



Buffet spoon large
20032
298mm



Serving spoon w/hole
20034
255mm



Buffet spoon small
20035
275mm



Buffet ladle
20033
255mm



Lasagna server
20036
300mm



Canape spoon mirror
20039
120mm



Canape spoon satin
20040
120mm



ALASKA SATIN

18/10 STAINLESS STEEL

tk | tablekraft

Alaska Satin servers are a showpiece on any table. Its elongated teardrop hollow handles combined with a soft satin finish, delivers a subtle take on a bold design. Alaska's modern curves and smooth angles invite guests to engage in the dining experience.



Serving fork
20020
225mm



Serving spoon
20021
223mm



Serving spoon/hole
20022
223mm



Buffet spoon
20023
253mm



Pastry server
20024
273mm



ALASKA MIRROR

18/10 STAINLESS STEEL

The reflective finish of Alaska Mirror offers a contrast in style delivering a bold statement to any table setting. Beautifully crafted, Alaska combines elongated teardrop hollow handles with a high mirror finish delivering a contemporary set of serving pieces.



Serving fork
20010
225mm



Serving spoon
20011
223mm



Serving spoon/hole
20012
223mm



Buffet spoon
20013
253mm



Pastry server
20014
273mm



Form and function combine in these top-quality steak knives. Each being the ideal tool for slicing through steaks.



Jumbo pakkawood round tip
20675
225mm



Jumbo pakkawood pointed tip
20676
223mm



Pakkawood handle
20651
273mm



Black handle pointed tip s/s
20640
223mm



Black handle rounded tip s/s
20642
253mm



Pistolgrip h/h
19982
223mm



Steak knife - pakkawood handle
20677
235mm



Tablekraft steak knife jumbo
black handle - pointed tip
20674
255mm

h/h = hollow handle st = standing knife



BOXED SETS

18/10 STAINLESS STEEL

tk | tablekraft

Tablekraft has an extensive range of gift sets which are packaged in premium boxes.

For further information on selected styles and configurations please visit the Tomkin website or contact your sales representative.



18/10 STAINLESS STEEL



Salad server box set



Server box set



Cheese and pate box set



Specialized box set



56 piece box set
Also available in 40pc, 32pc and 24pc sets



Accessory box set

h/h = hollow handle, st = standing knife



“Dining is not just about the consumption of food, it can and should be a complete sensory experience, a journey of discovery”

William Welch

AWARDS



reddot design award

Red Dot stands for belonging to the best in design and business, and is an internationally recognised quality label. As design promoters they spread the idea of design internationally as well as presenting the latest developments in design. Studio William have been awarded the illustrious Red Dot award in 2007, 2010 and 2011.



The iF awards have been recognising outstanding design since 1953. The iF label is a seal of quality known all over the world. Studio William have received the iF product design award in 2012.



Good Design is the world's most prestigious, recognized and oldest Design Awards program organized annually by the Chicago Athenaeum Museum of Architecture and Design in cooperation with The European Centre for Architecture, Art, Design and Urban Studies. Studio William have been the recipient of the Good Design award in both 2008 and in 2011.





STUDIO**WILLIAM**®

THE DESIGN LEADER

William Welch is the founder and owner of Studio William. He is an award winning British Industrial Designer whose elegant cutlery designs can be found in many of the greatest restaurants and retail stores around the world.

Studio William Welch Ltd is one of the world's most innovative cutlery companies, researching human emotion and the perception of dining to create challenging and charismatic designs. Each piece is hand finished to ensure a high level of quality.

Beautifully packaged, each design is inspired by the form and characteristics of the tree it is named after.



MULBERRY

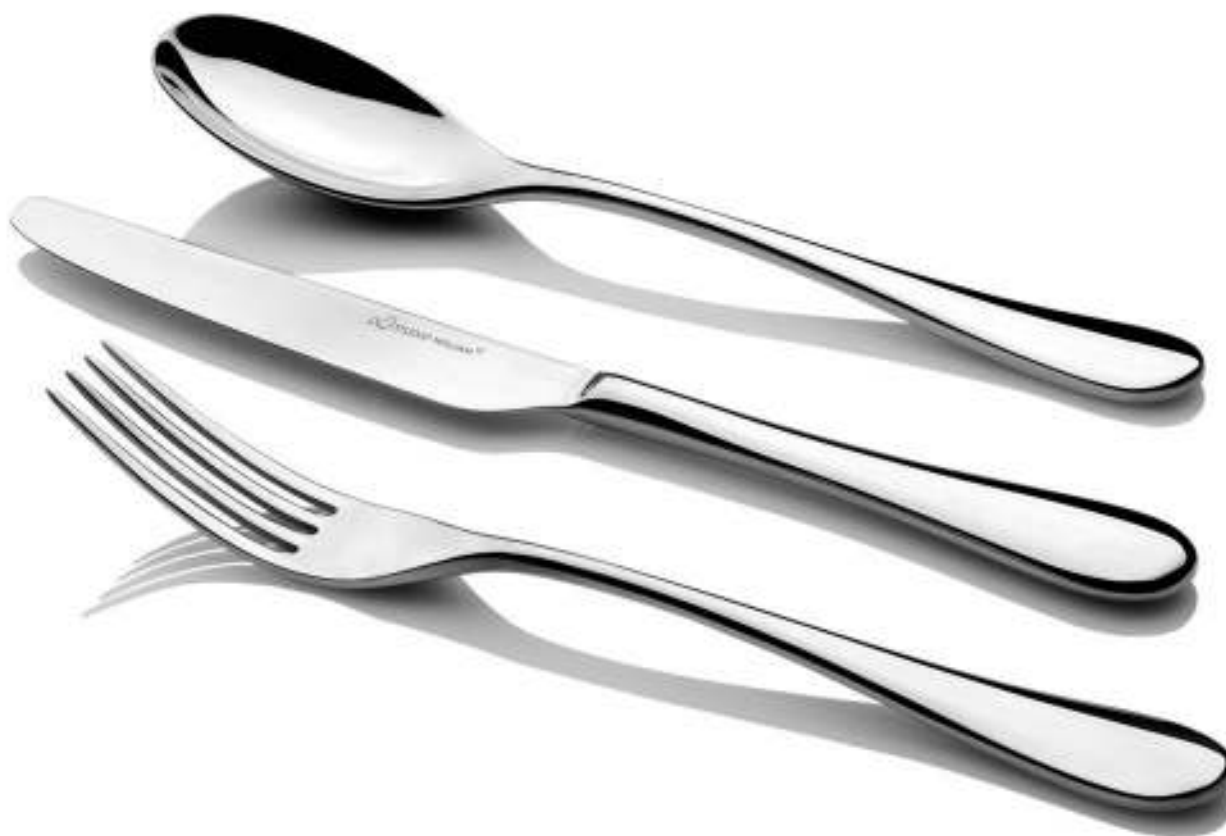
MIRROR FINISH - 18/10 STAINLESS STEEL


STUDIOWILLIAM®

The simple, slender and elegant design of Mulberry cutlery is inspired by the thin glossy, light green leaves of the white Mulberry tree. The curved base of the handle representing its lobed shaped buds.



reddot design award





MIRROR FINISH – 18/10 STAINLESS STEEL



Dessert fork
SWW-MUM04
188mm



Table fork
SWW-MUM02
210mm



Table knife
SWW-MUM01
240mm



Dessert knife
SWW-MUM05
212mm



Soup spoon
SWW-MUM03
210mm



Dessert spoon
SWW-MUM06
188mm



Tea spoon
SWW-MUM07
132mm



Bouillon spoon
SWW-MUM34
188mm



Serving fork
SWW-MUM11
248mm



Serving spoon
SWW-MUM09
248mm



Steak knife
SWW-MUM15
245mm



Espresso spoon
SWW-MUM14
105mm



Soda spoon
SWW-MUM18
188mm



Butter knife
SWW-MUM19
172mm



Gourmet spork
SWW-MUM46
134mm



Mini ladle
SWW-MUM37
126mm



Buffet spork
SWW-MUM48
185mm



Taster tweezer
SWW-MUM49
188mm



Lobster fork
SWW-MUM50
200mm



Chopsticks
SWW-MUM31
240mm



Meat Blade
SWWA-MBMUM
250mm



Crescent
SWW-MUM42



Pallet
SWW-MUM43



Split
SWW-MUM41



Twin
SWW-MUM40

Mulberry Tasting Spoons | 115mm



KUMQUAT

MIRROR FINISH - 18/10 STAINLESS STEEL



STUDIO WILLIAM®

Elegant and poised, Kumquat knives have been specially created to blend into our Karri pattern, for those who wish to have an alternative to this pattern's stand-up knife. The form has simplicity and sophistication. The clean straight lines are balanced with the soft, oval section of the handle.



THE CHICAGO
ATHENAEUM
MUSEUM OF
ARCHITECTURE
AND DESIGN



Table knife
SWW-KQM01
245mm



Dessert knife
SWW-KQM05
212mm



Butter knife
SWW-KQM19
172mm



Steak knife
SWW-KQM15
251mm

SATIN FINISH - 18/10 STAINLESS STEEL

The strong elegant design of Baobab cutlery is influenced by the majestic, broad trunk of the Baobab tree. The soft satin finish inspired by its smooth silvery bark.



Dessert fork
SWW-BBS04
185mm



Table fork
SWW-BBS02
205mm



Table knife
SWW-BBS01
235mm



Dessert knife
SWW-BBS05
212mm



Soup spoon
SWW-BBS03
205mm



Dessert spoon
SWW-BBS06
185mm



Teaspoon
SWW-BBS07
132mm



Bouillon spoon
SWW-BBS34
185mm



BAOBAB

MIRROR FINISH - 18/10 STAINLESS STEEL

The strong elegant design of Baobab cutlery is influenced by the majestic, broad trunk of the Baobab tree. The polished surface gives a smoother, silkier feel to its satin equivalent.





Dessert fork
SWW-BBM04
185mm



Table fork
SWW-BBM02
205mm



Table knife
SWW-BBM01
235mm



Dessert knife
SWW-BBM05
212mm



Soup spoon
SWW-BBM03
205mm



Dessert spoon
SWW-BBM06
185mm



Teaspoon
SWW-BBM07
132mm



Bouillon spoon
SWW-BBM34
185mm



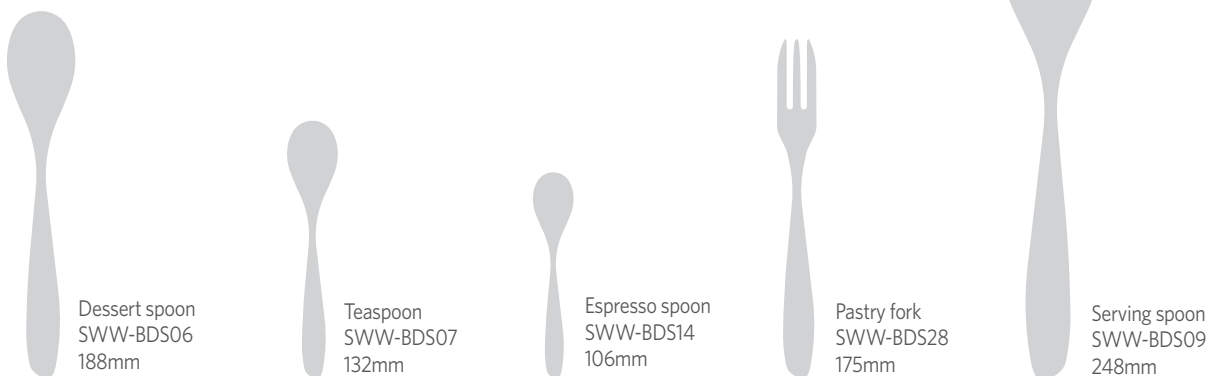
BODHI

SATIN FINISH - 18/10 STAINLESS STEEL



STUDIOWILLIAM®

The satin finish of Bodhi cutlery reflects the smooth grey bark of the Bodhi tree. The easily recognisable heart-shaped leaves with extended tips are reflected in the distinctive curve and point of the Bodhi knife.





The distinctive offset features of Bodhi give this cutlery pattern a perfectly balanced form. Bodhi cutlery is made using the finest quality 18/10 stainless steel.



Table knife
SWW-DM01
234mm



Dessert knife
SWW-BDM05
212mm



Soup spoon
SWW-DM03
210mm



Dessert spoon
SWW-BDM06
188mm



Bouillon spoon
SWW-BDM34
234mm



Dessert fork
SWW-BDM04
188mm



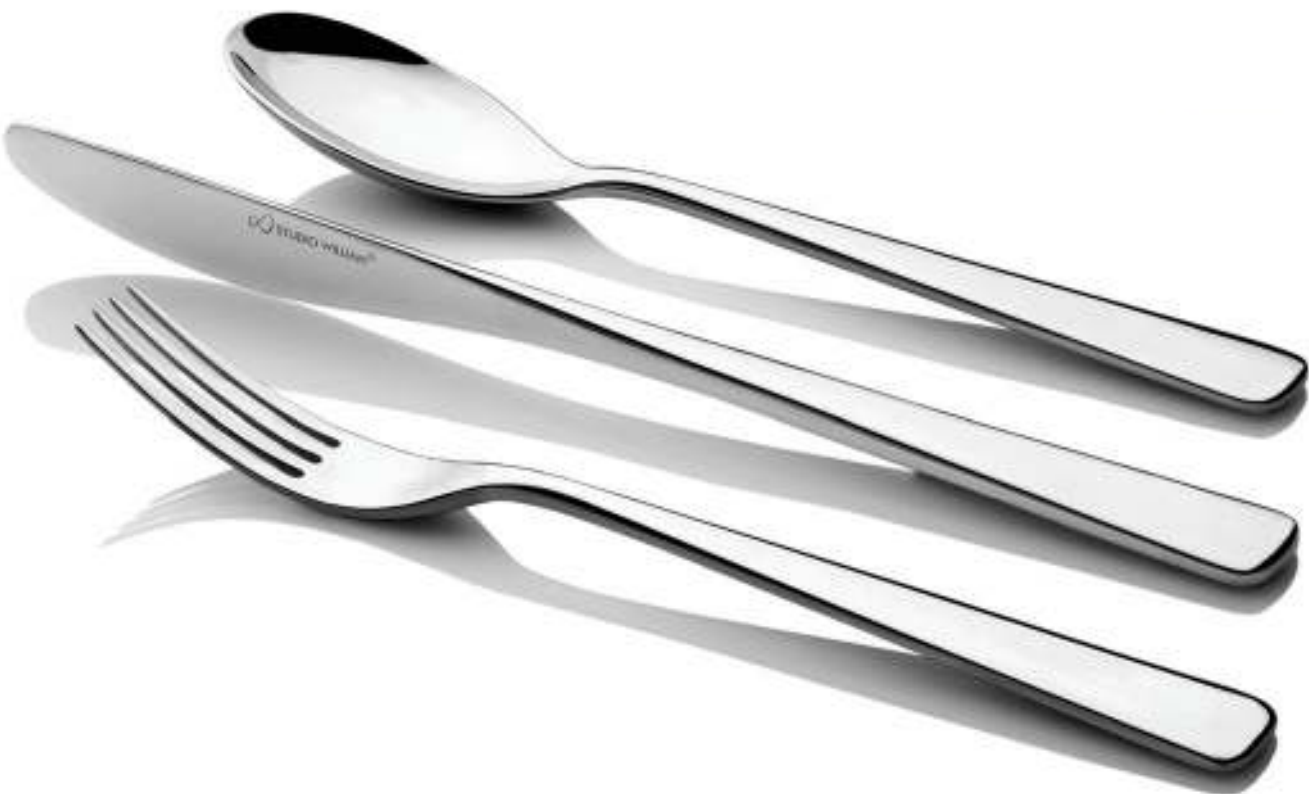
Table fork
SWW-BDM02
210mm



KARRI

MIRROR FINISH - 18/10 STAINLESS STEEL

Karri's form has simplicity and sophistication. The clean lines are balanced with the soft, oval section of the handle. Karri cutlery has been awarded the good design award 2008 and has been placed in the permanent design collection of the Chicago Athenaeum Museum Of Architecture And Design.





MIRROR FINISH - 18/10 STAINLESS STEEL



Dessert fork
SWW-KAM04
188mm



Table fork
SWW-KAM02
210mm



Table knife
SWW-KAM01
245mm



Dessert knife
SWW-KAM05
219mm



Soup spoon
SWW-KAM03
210mm



Dessert spoon
SWW-KAM06
188mm



Teaspoon
SWW-KAM07
132mm



Bouillon spoon
SWW-KAM34
188mm



Coffee spoon
SWW-KAM13
116mm



Espresso spoon
SWW-KAM14
106mm



Butter knife
SWW-KAM19
172mm



Pastry fork
SWW-KAM28
175mm



Gourmet spork
SWW-KAM46
134mm



Soda spoon
SWW-KAM18
188mm



Serving fork
SWW-KAM11
248mm



Serving spoon
SWW-KAM09
248mm



Steak knife
SWW-KAM15
250mm



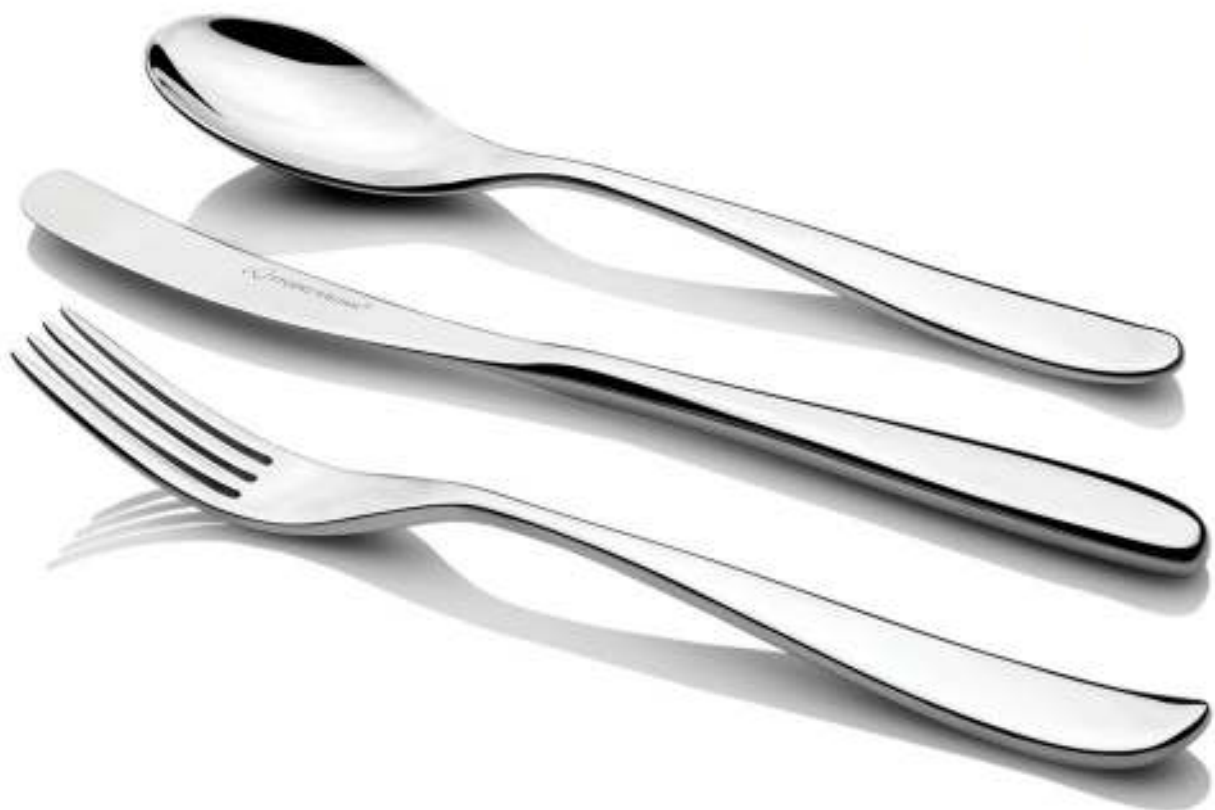
OLIVE

MIRROR FINISH - 18/10 STAINLESS STEEL

Using beautifully refined asymmetric lines Olive challenges the appearance of traditional cutlery. Olive won the prestigious Reddot Award 2007 and has been placed in the permanent collection at the Design Museum in Germany.



reddot design award





MIRROR FINISH - 18/10 STAINLESS STEEL



Dessert fork
SWW-OLM04
188mm



Table fork
SWW-OLM02
208mm



Table knife
SWW-OLM01
235mm



Dessert knife
SWW-OLM05
212mm



Soup spoon
SWW-OLM03
203mm



Dessert spoon
SWW-OLM06
188mm



Teaspoon
SWW-OLM07
132mm



Espresso spoon
SWW-OLM14
105mm



Pastry fork
SWW-OLM28
175mm



Steak knife
SWW-OLM15
235mm



Fruit fork/Childs fork
SWW-OLM26
150mm



Butter knife/Childs knife
SWW-OLM26
172mm



Fruit spoon/Childs spoon
SWW-OLM27
150mm



Cocktail/taster fork
SWW-OLM45
150mm



Gourmet spork
SWW-OLM46
134mm



Serving fork
SWW-OLM11
248mm



Serving spoon
SWW-OLM09
248mm



REDWOOD

MIRROR FINISH - 18/10 STAINLESS STEEL



STUDIO WILLIAM®

Standing as one of the tallest trees in the world, the Redwood trunk has a single, straight column, with a tapering effect at the base. This is reflected in the graceful design of Redwood cutlery.





MIRROR FINISH - 18/10 STAINLESS STEEL



Dessert fork
SWW-REM04
188mm



Table fork
SWW-REM02
205mm



Table knife
SWW-REM01
235mm



Dessert knife
SWW-REM05
210mm



Soup spoon
SWW-REM03
205mm



Dessert spoon
SWW-REM06
188mm



Teaspoon
SWW-REM07
132mm



Bouillon spoon
SWW-REM34
188mm



Coffee spoon
SWW-REM13
116mm



Espresso spoon
SWW-REM14
106mm



Serving fork
SWW-REM11
248mm



Serving spoon
SWW-REM09
248mm



Steak fork
SWW-REM15
250mm



Butter knife
SWW-REM19
172mm



Pastry fork
SWW-REM28
175mm



Seafood fork
SWW-REM35
150mm



MULBERRY TASTING SPOONS

MIRROR FINISH - 18/10 STAINLESS STEEL

Each of the four gourmet taster spoons are designed to challenge the diners taste buds by providing a canvas for the Chef to experiment with food. They offer a culinary experience through tasting menus, amuse bouche or deserts and aim to maximise flavours by understanding the science of the tongue. Presented as one spoon design or as a mixture of spoon designs, these gourmet taster spoons compliment a new era in dining.



Crescent
SWW-MUM42
115mm



Pallet
SWW-MUM43
115mm



Split
SWW-MUM41
115mm



Twin
SWW-MUM40
115mm



Housed in beautifully designed gift boxes these cutlery sets make a great wedding or housewarming gift. The accessory set come in many different configurations for more information please contact Tomkin Australia.



Childrens cutlery sets



Serving fork and spoon



Soda spoons



Coffee spoon set



Cake server and sauce ladle



Serving spoon set



Gift box set available in 56 piece



CUTLERY MAKING PROCESS

KNIFE



- BLANKING STAINLESS STEEL SHEET
- HOT FORGING HANDLE AND BOLSTER
- ROLLING BLADE
- CLIPPING OUT HANDLE
- CLIPPING OUT BLADE
- TEMPERING (HARDENING) BLADE
- GRINDING
- BUFFING
- FIRST POLISHING
- FINAL POLISH
- THE KNIFE IS NOW SENT TO BE QC INSPECTED

SPOON



- BLANKING STAINLESS STEEL SHEET
- FIRST ROLLING OF HEAD
- SECOND ROLLING OF HEAD
- FIRST HANDLE FORMING
- SECOND HANDLE FORMING
- BOWL PROFILE TRIMMED TO SHAPE
- EDGE GRINDING
- HEAD GRINDING
- HEAD AND BOWL BUFFING
- BOWL FORMED TO SHAPE
- BACK STAMP APPLIED
- FIRST POLISHING
- FINAL POLISHING

FORK



- BLANKING STAINLESS STEEL SHEET
- FIRST ROLLING OF HEAD
- SECOND ROLLING OF HEAD
- FIRST HANDLE FORMING
- SECOND HANDLE FORMING
- FORK HEAD TRIMMED TO SHAPE
- OUTER TINES CLIPPED OUT
- INNER TINES CLIPPED OUT
- HANDLE EDGES SHAPED
- HEAD AND TINES EDGE GRINDING
- HEAD BUFFING
- HEAD FORMED
- TINES BACK POLISHED
- BACK STAMP APPLIED
- FIRST POLISHING
- FINAL POLISHING